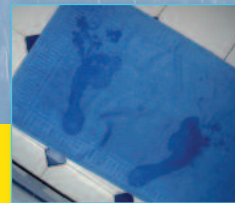


Lets Use Water Wisely Factsheet

Bathroom
Manufacturers
Association

BMA



Water is life, we cannot live without it and it is very often taken for granted.

Growing population, climate change, and behaviour, single occupancy households and aging infrastructure are all adding pressure on a water supply that is already struggling to balance supply and demand. Governments around the world are implementing strategies, new legislation and regulation, which will ultimately influence a greater choice of water efficient products coming onto the market.



Many millions of litres of water per day are unnecessarily wasted. By using water wisely today we secure the supply for tomorrow's generation.

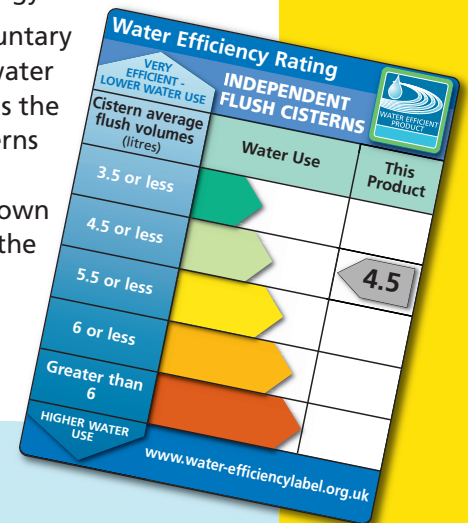
The average person in England and Wales uses approximately 150 litres of water per day, mainly for bathing, cooking, cleaning, drinking and flushing the WC. This is an increase of 50% more water than 25 years ago. In real terms we actually use in excess of 3,400 litres of water every day, as all that we consume has embedded water.

Water is hidden in all that we see, e.g. bricks, drives, cars, clothes and the food we eat. We can significantly and easily reduce our water footprint, be more conscious of water when we buy goods, ask the question "how much water does this product use?" and the bathroom is a good starting point as more than 60% of water used in the home is in the bathroom. Install a new bathroom today with the latest technologically advanced efficient product and you will not only save water but money and make you feel good that you are helping to save the planet.

Bathroom manufacturers are responding positively to the implementation of government's numerous strategies across the whole of the bathroom sector and changes to Regulation and Legislation. With the use of innovative design and the latest advanced technology, bathroom manufacturers are offering a comprehensive portfolio of water efficient bathroom products, that deliver the bathing and showering experience the consumer has come to enjoy.

This fact sheet is aimed at helping the reader to use water in the home more wisely which will ultimately help control and reduce water and energy bills.

The Water Efficient Product Labelling Scheme, introduced on a voluntary basis by Industry in 2007, is a useful tool to aid in the selection of water efficient products. The comprehensive database of product provides the user with information on water volumes within WCs, Flushing Cisterns and Baths, with Shower Controls, Showerheads and Taps providing information on the level of water via the flow rate. All products shown have a picture and contact details of manufacturers together with the relevant ordering/model code. To find out more on the Water Efficient Product Labelling Scheme visit www.water-efficiencylabel.org.uk



Lets Use Water Wisely Factsheet

USING THE WC

WCs are still one of the largest water users in the home, even though the amount of water used to flush WCs today has tumbled from 13 litres in the 1950's, to today's ultra efficient dual flush, using less than 4.5 litres per flush. Today's Water Regulations state that WCs must use no more than 6 litres of water per flush.

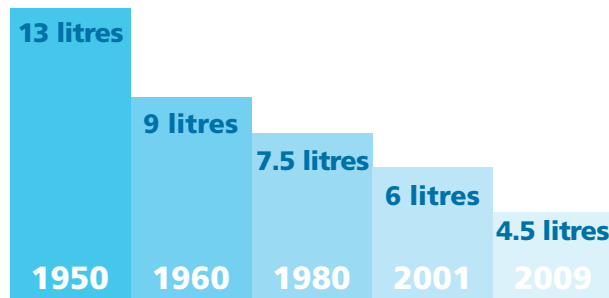


Chart showing how the flush capacity of WC's has reduced since the 1950's

There are around 45 million WCs in UK homes, using an estimated 2 billion litres of fresh water every day. It is estimated that 11 million of those WCs use 7.5 litres or more per flush. As sanitaryware is a wonderfully hard working material and doesn't wear out, the result is that we have many millions of WCs that are using excessive amounts of wholesome water every time they are flushed.



A typical bathroom suite of the 1950's - note the size of the cistern to the WC.

Today's 6/4 litre dual flush WC can give an average flush of 4.5 litres - half the volume used in the 1960's.



Dual Flush – what is it?

Why not change to an ultra efficient WC that uses less than 4.5 litres per flush and save yourself not only water but money.

Factoid – did you know that on average we use the WC 5 times per day, if your WC is pre 1950 did you know that you use on average 23,725 litres of water per year. Install one of today's efficient WCs and save as much as 18,340 litres of water per year. That's the equivalent of 55,000 cups of tea, or one day's access to drinking water for 7,336 people living in Africa. Change that loo today!

The majority of WCs sold today are of a dual flush operation and are very water efficient.

Dual flush WCs operate on a split button with the user having the option of which one to use. Usually the smaller button operates the shorter flush which is adequate for flushing liquid waste. The larger button should be used for more substantial waste.

Many people use the WC as a waste bin for tissues, cotton wool, waste food, caught insects etc. To reduce unnecessary waste of water and increased risk of blocked drains, wrap it, bin it, but do not flush it!

Lets Use Water Wisely Factsheet

Turning the Tap

Taps can use in excess of 6 litres of water per minute and are often second to the WC for using the most water within the home. Many consumers leave taps running, washing vegetables, rinsing, brushing teeth and shaving use a bowl or tumbler and save many millions of litres of water per day.

Factoid – Worn tap washers which are not replaced can waste more than 15 litres of water a day, 5,500 litres per year, or the equivalent of 416 buckets of water per year per tap – that's an awful lot of water going to waste. Turn the tap off, put the plug in a basin and replace those worn washers today!

Cleaning your teeth under running water, wastes in excess of 180 million litres of water per year. Use a tumbler of water for rinsing and help to conserve today's water for tomorrow's generation.



Today's latest design in taps using click technology allows greater flexibility on the control of the amount of water you use. It's so easy to

use, lift the lever until you feel a slight resistance, this is the indication that the tap is using 50% of the flow, more than adequate for

the majority of applications. A little more pressure and full flow is in operation.



Press taps are also becoming more widely used, giving a short flow of water during a pre determined time, great idea and work extremely well in the cloakroom.

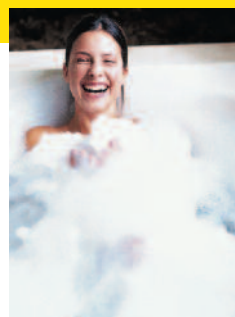
These are just two examples of how Industry, technology and design are coming together to offer a greater choice of water efficient products.

One of the easiest ways to reduce the amount of water is the fitting of a flow restrictor. Many taps and shower controls will be sold with a flow restrictor. Often you will find it is loose in the box allowing the installer the choice to fit at a predetermined flow rate – reducing the amount of water.

Soaking it UP!

Did you know that for every bath you take you use around 80 litres of water?

Many people overfill the bath so that when they get in, they displace so much water that it runs away down the overflow.



Over filling the bath wastes water and the energy it takes to heat the water.

Consider these points when you are purchasing a bath – how much water will it take to fill, how much energy to heat the water – do you use the bath daily or do you prefer a shower? A smaller bath will use less water but may not meet your needs and therefore a shower may be the option.

Taking a shower instead of bath can save up to 55% of water that you use. Many showers available today include water saving features. Economy or pause buttons allow the user to soap up without the water running to waste. Timers give a reminder of usage – allowing you to become water wise!

An average shower uses 9 litres of water per minute and research shows that the average person spends 7 minutes in the shower, using 63 litres of water. If you reduce the time you spend by two minutes you can save more than 6,570 litres over the year. Research is also showing that there is a growing desire to take several showers a day – is this necessary – think before you shower!



Lets Use Water Wisely Factsheet

Cleaning and Maintenance

We all like a sparkling clean bathroom. So when cleaning, only turn the tap on to rinse the fixtures and fittings, then dry with a clean cloth to give that sparkle. The cleaning cloth should be rinsed in a basin with the plug in!

Regular maintenance of tap washers and replacing worn plugs will prevent wastage of water.

Dead-legs, leaks and insulation

Insulate all exposed water pipes, especially those that contain a dead-leg of water. A dead-leg is a piece of pipe work where the water remains in the pipe once the delivery mechanism has been turned off. A lot of water can be lost and a considerable amount of damage can be done if the pipes burst.

During the planning process ask your installer or retailer to keep the dead-legs to a minimum. If you have to run the basin, bath taps and the shower a long time before hot water arrives you can waste more water than you use!

Careful siting of the hot water storage cylinder and boiler can help reduce this expensive waste.

Know where your stop taps are located. In the event that you do have a burst pipe, you can waste copious amounts of water and cause untold damage to the home if you can't quickly switch off the water supply.

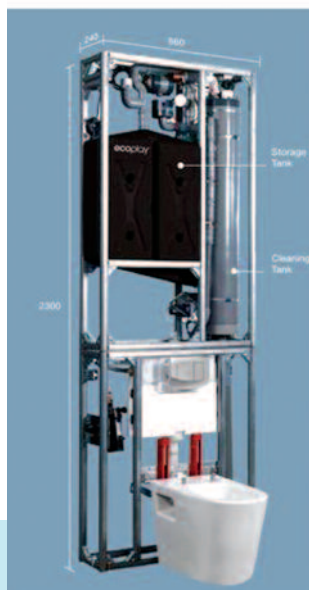
Grey Water and Rainwater Systems

So what is a grey water system? It's where the water from the bath and shower is taken, filtered and stored to flush the WC. In some instances the water can be used for washing clothes as the treatment is so fine tuned.

Grey water systems are becoming more popular as it allows an 'offset' against a high flow rate shower or extremely large bath, under the 125litres per person per day detailed within the Building Regulations.

Rainwater systems collect rainwater from the roof of the building, filter out the leaves and debris, clean the water and store it in a holding tank. This water can be used for watering the garden plants, flushing the WC and washing the car.

The Ecoplay System



Water Metering

There is a growing consideration for all properties in England and Wales to be fitted with a water meter with some experts stating that a smart meter should be installed to ensure the householder has greater control on all energy and water use.


Water meters will enable the conscientious to use water wisely and reduce water bills.

The Bathroom Manufacturers Association works closely with Government, Water Industry and other interested parties to encourage everyone to use water wisely.

In today's fast paced lifestyle and the advancement of technology bathroom manufacturers have introduced bathroom equipment that use less water but offer the same performance the consumer has come to enjoy. Change your age old bathroom suite and save many thousands of litres of water. A new bathroom will not only bring added benefits to you, enhance your lifestyle, better hygiene conditions but will actually increase the value and saleability of your home. What are you waiting for!

Lets Use Water Wisely Factsheet

Contact details for plumbing organisations.



The Bathroom Manufacturers Association is the trade association that represents the major manufacturers of bathroom products, ranging from sanitaryware, baths, taps, showers, enclosures, accessories and furniture.

Members of the BMA offer products with an outstanding combination of quality, style, design, colour and availability.



The Chartered Institute of Plumbing and Heating Engineering (CIPHE) is the professional body for the UK plumbing industry.

For a list of members telephone **01708 472791**, or visit the web site **www.iphe.org.uk**



The Association of Plumbing & Heating Contractors (APHC) is the leading Trade Association for the plumbing & heating industry in England & Wales.

For a list of members telephone **02476 470626** or visit the web site **www.aphc.co.uk**



CIPHE has introduced a new free scheme called GreenPlumb which will make it easier for consumers to pick a professional when considering integrating renewable/sustainable technologies and solutions within their homes. For more information visit the web site:

www.ciphe.org.uk/GreenPlumb



Scottish and Northern Ireland Plumbing Employers Federation (SNIPEF) is the trade association representing businesses involved in the installation and maintenance of plumbing and heating systems.

For a list of members telephone **0131 225 2255**, or visit the website **www.snipef.org**